
CRWUA 2021

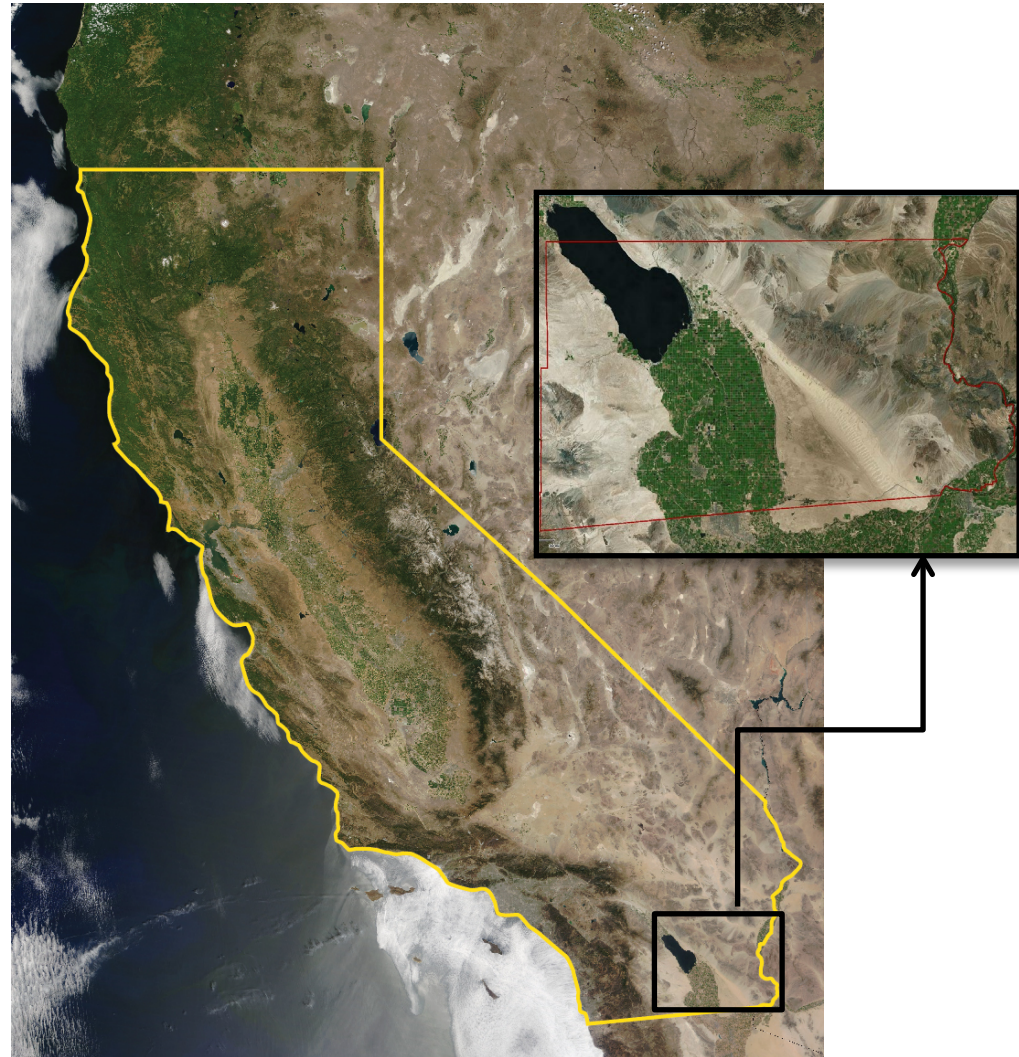
Touchy Issues: Consequential Effects of Agricultural-to-Urban Water Conservation Transfers

Tina Shields, PE
Water Manager
tlshields@iid.com



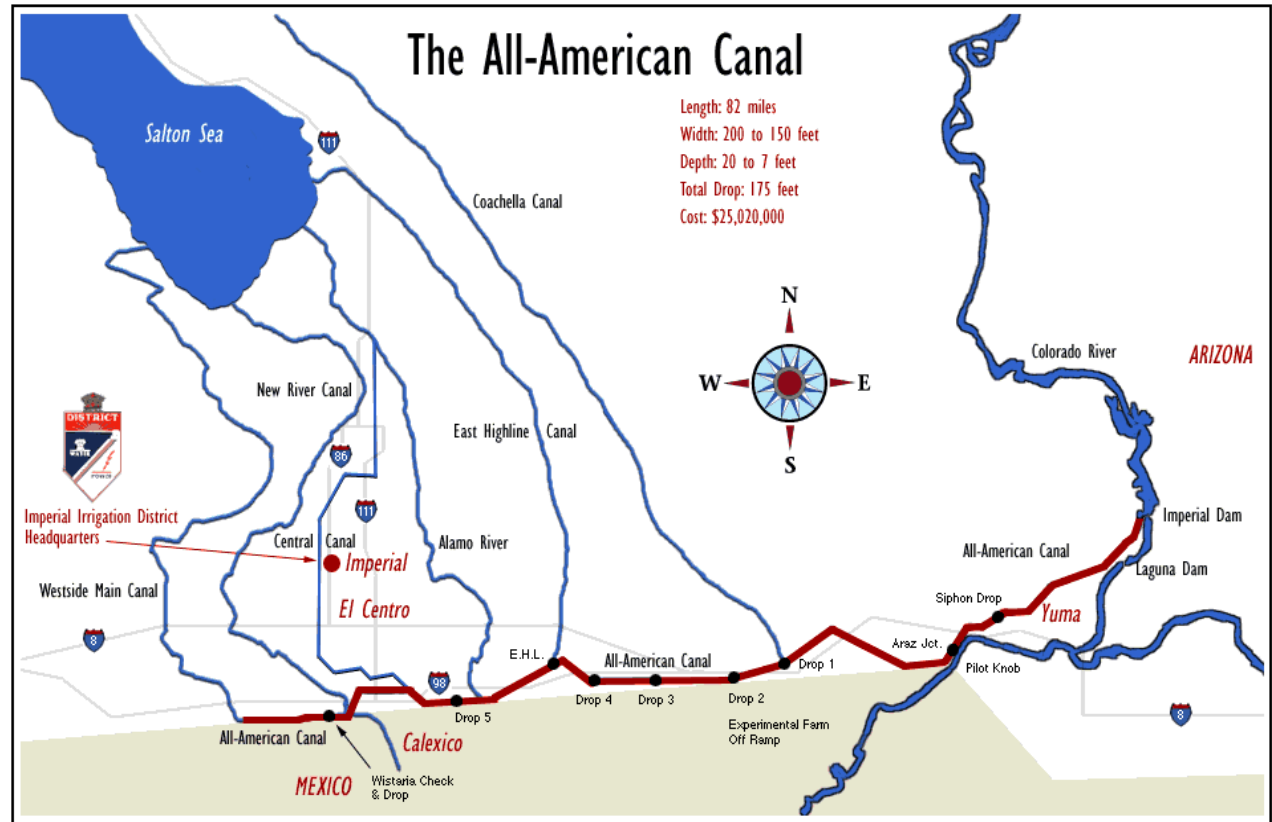
IID

A century of service.

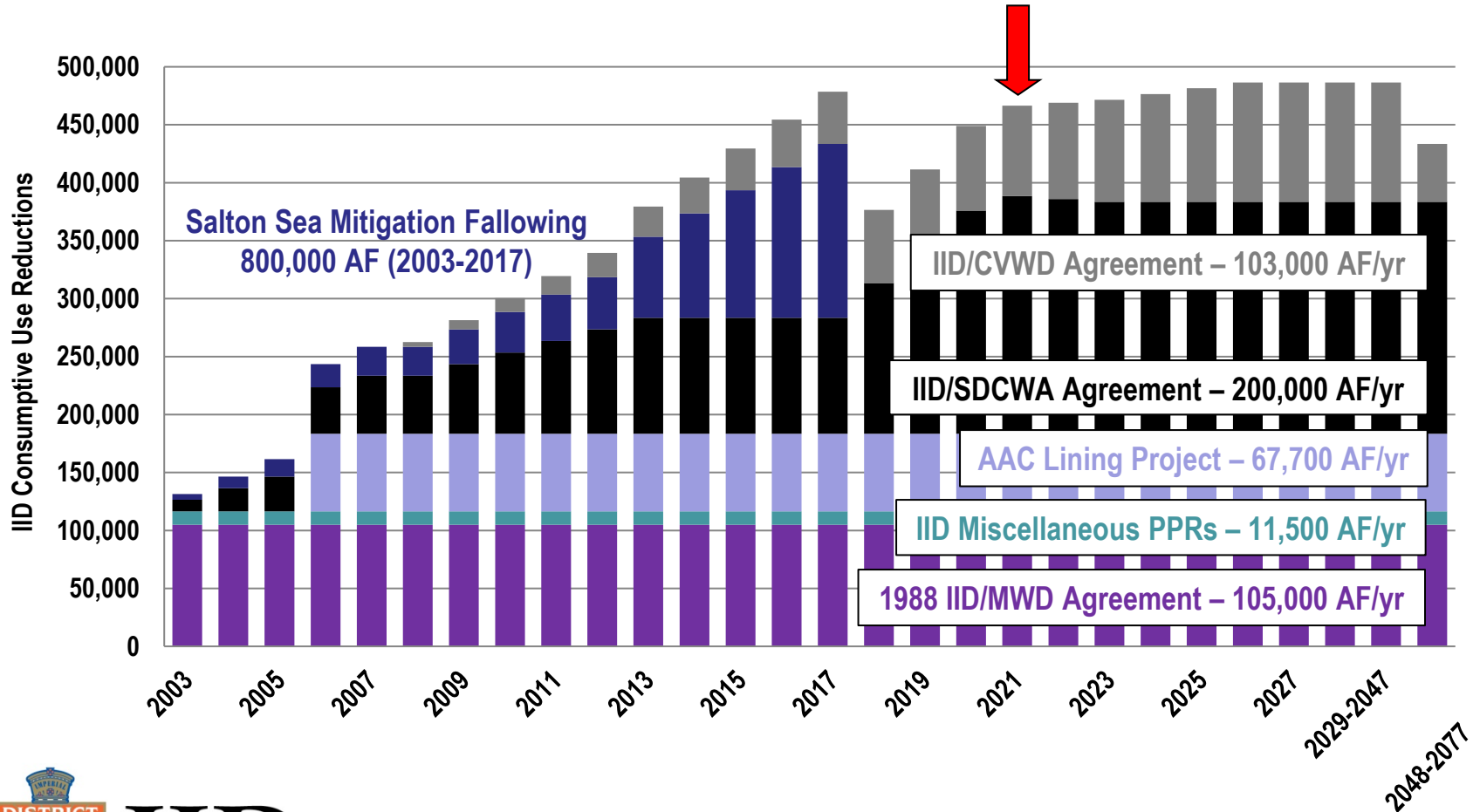


IID's Water Supply & Service Area

- 3,100,000 acre-feet annual Colorado River consumptive use entitlement
- 1,061,637 – gross acres within boundaries
- 520,307 – total acreage receiving water
- 471,682 – total farmable acreage
- Imperial Dam diversion structure, headworks and six desilting basins
- 82-mile long All-American Canal



Water Conservation & Transfer Programs



The Salton Sea



- 360 square miles, up to 52' deep
- Congressionally designated agricultural sump for IID/CVWD
- Volume of 7.5 MAF with annual inflow of up to 1.3 MAF, no outflow
- Nearly 50% saltier than the ocean
- Repository for agricultural drainage
- Heavily used by migratory waterfowl including endangered species
- > 10' elevation decline since 2003; despite the replacement of conserved water reductions through the delivery of mitigation water
- Without transfers, Sea was estimated to turn hypersaline between 2010 and 2025
- With transfers, Sea is estimated to turn hypersaline 1-9 years earlier

www.iid.com





California's Phase I Salton Sea Management Plan

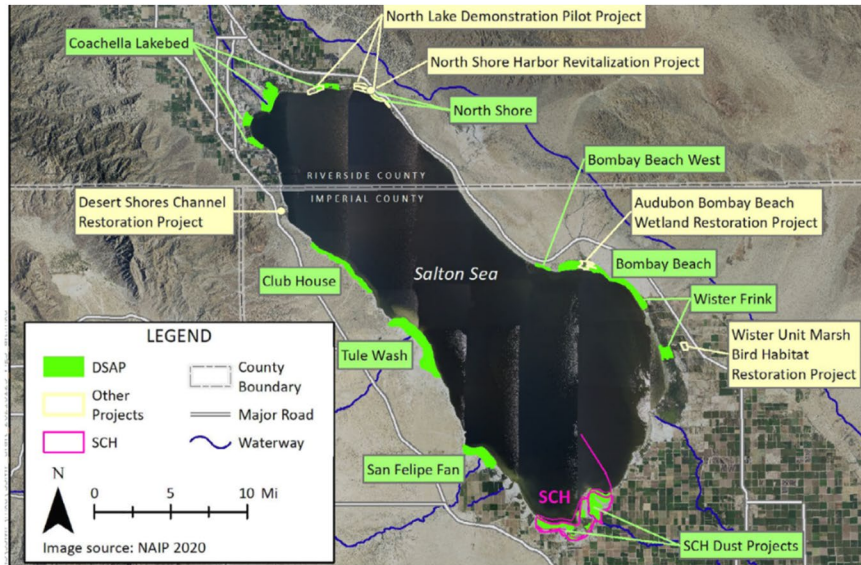
	2017	2018	2019	2020	2021	2022	2023	2024	2025	2026	2027	2028
Total Projected/ Actual Salton Sea Exposed Playa Acreage	18,625 18,500	22,172 21,000	26,381 23,900	31,427 25,600	37,011 27,700	42,540	47,863	52,752	57,067	60,905	64,200	66,948
Annual Projected/ Actual Increase in Exposed Playa Acreage		3,547 2,500	4,209 2,900	5,046 1,700	5,584 2,100	5,529	5,323	4,889	4,315	3,838	3,295	2,748
SSMP Annual Project Acreage Milestones		500	1,300	1,700	3,500	1,750	2,750	2,700	3,400	4,000	4,000	4,200
SSMP Annual Project Acreage		0	0	755	---	---	---	---	---	---	---	---
SSMP Cumulative Project Acreage Milestones		500	1,800	3,500	7,000	8,750	11,500	14,200	17,600	21,600	25,600	29,800
SSMP Cumulative Project Acreage Deficit		(500)	(1,800)	(2,745)	---	---	---	---	---	---	---	---



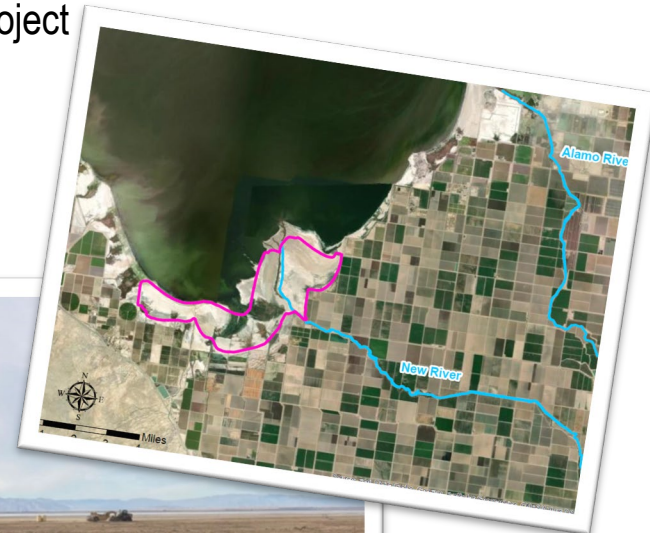
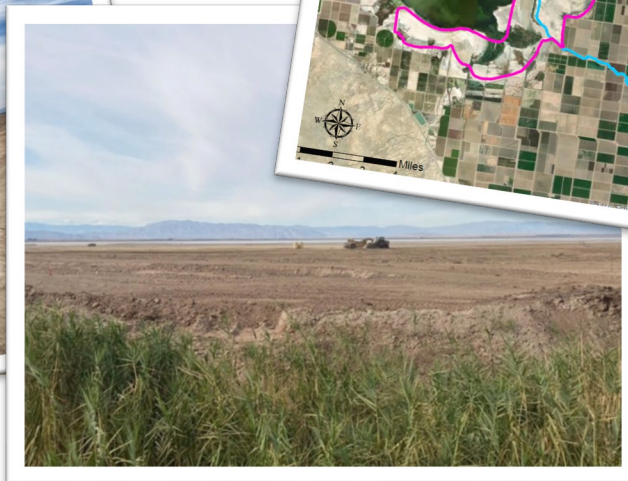
IID

A century of service.

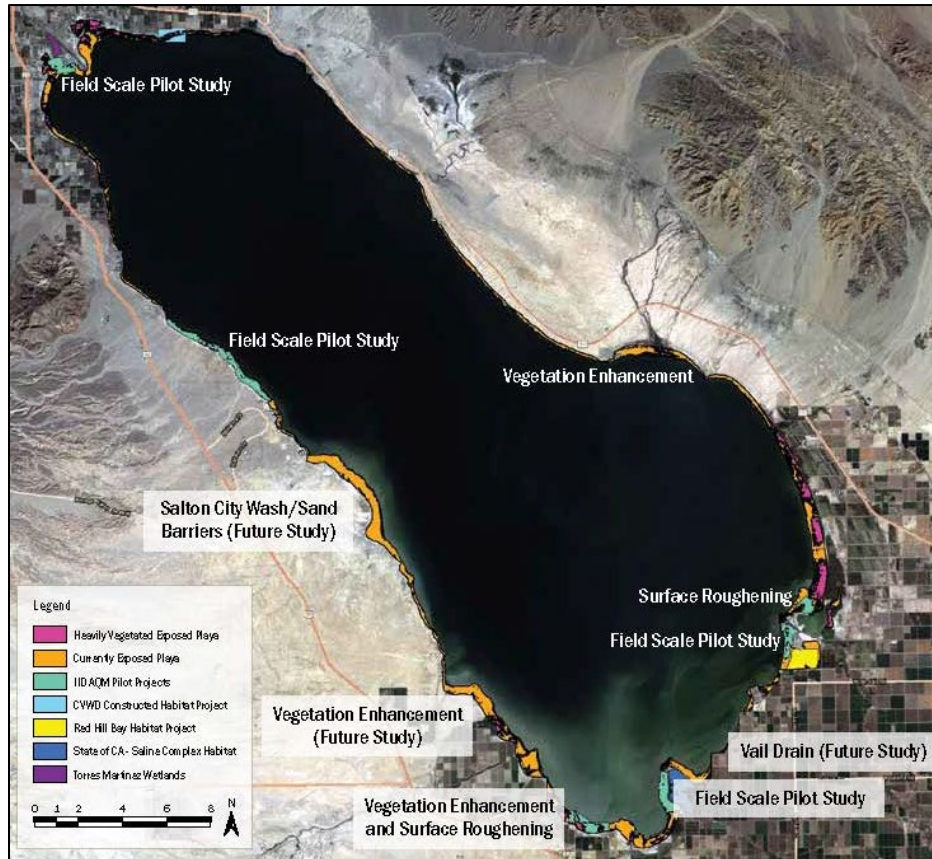
California Salton Sea Management Program



- 750 acres dust suppression projects
- 4,110 acre Species Conservation Habitat (SCH) project will create a network of ponds with islands and areas of varying water depths to provide fish and bird habitat and suppress potential dust emissions
- Construction initiated in 2021 on the \$206.5 million project



IID's Salton Sea Air Quality Mitigation Program



- Developed in coordination with Imperial County; a comprehensive, science-based adaptive approach to characterize emissions potential of exposed playa as the Sea recedes and proactively implement projects to prevent significant dust emissions
- Pilot testing a range of dust control measures tailored to climate and soil conditions around the Salton Sea
- Identifying measures that can be quickly implemented and scaled to create a stable surface and/or prevent the spread of dust emissions on exposed playa



Uncontrolled Playa

Edge of Field Scale Pilot Study

Why restoration?



ch2m






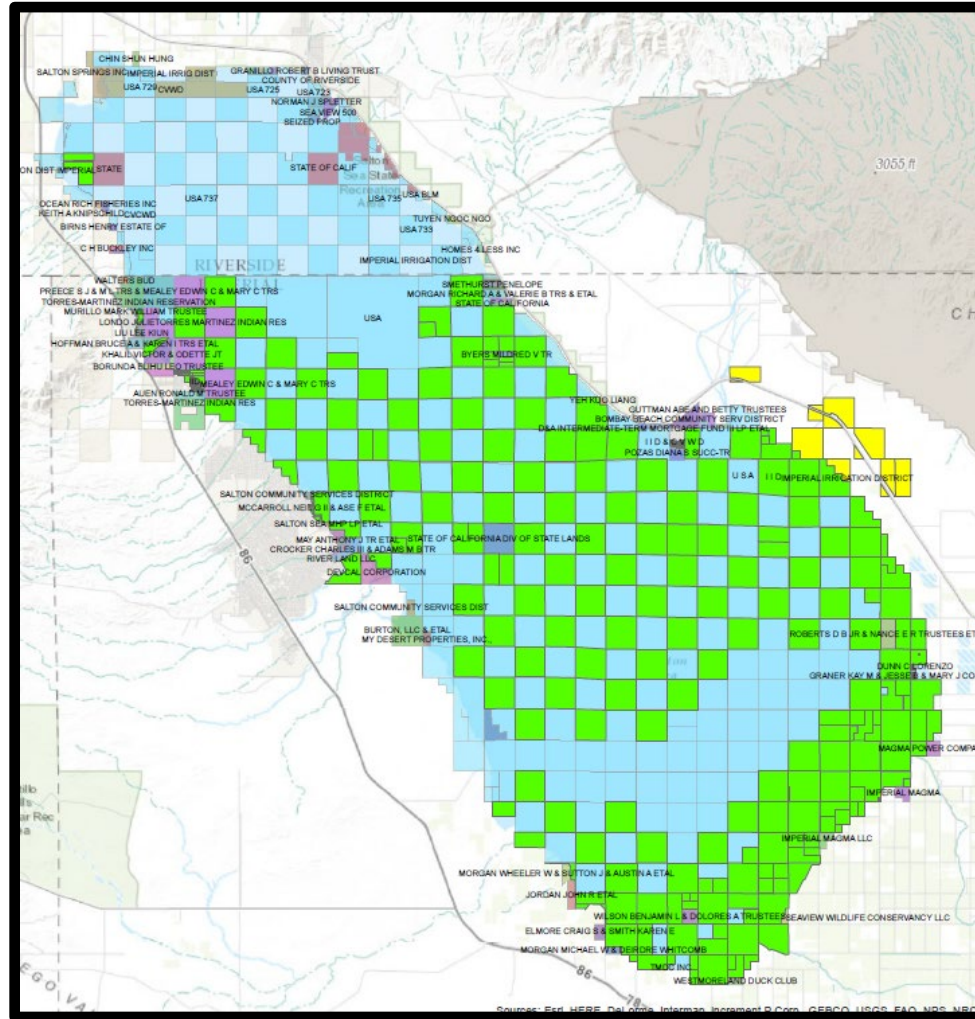
IID

A century of service.

www.iid.com

Salton Sea Land Ownership

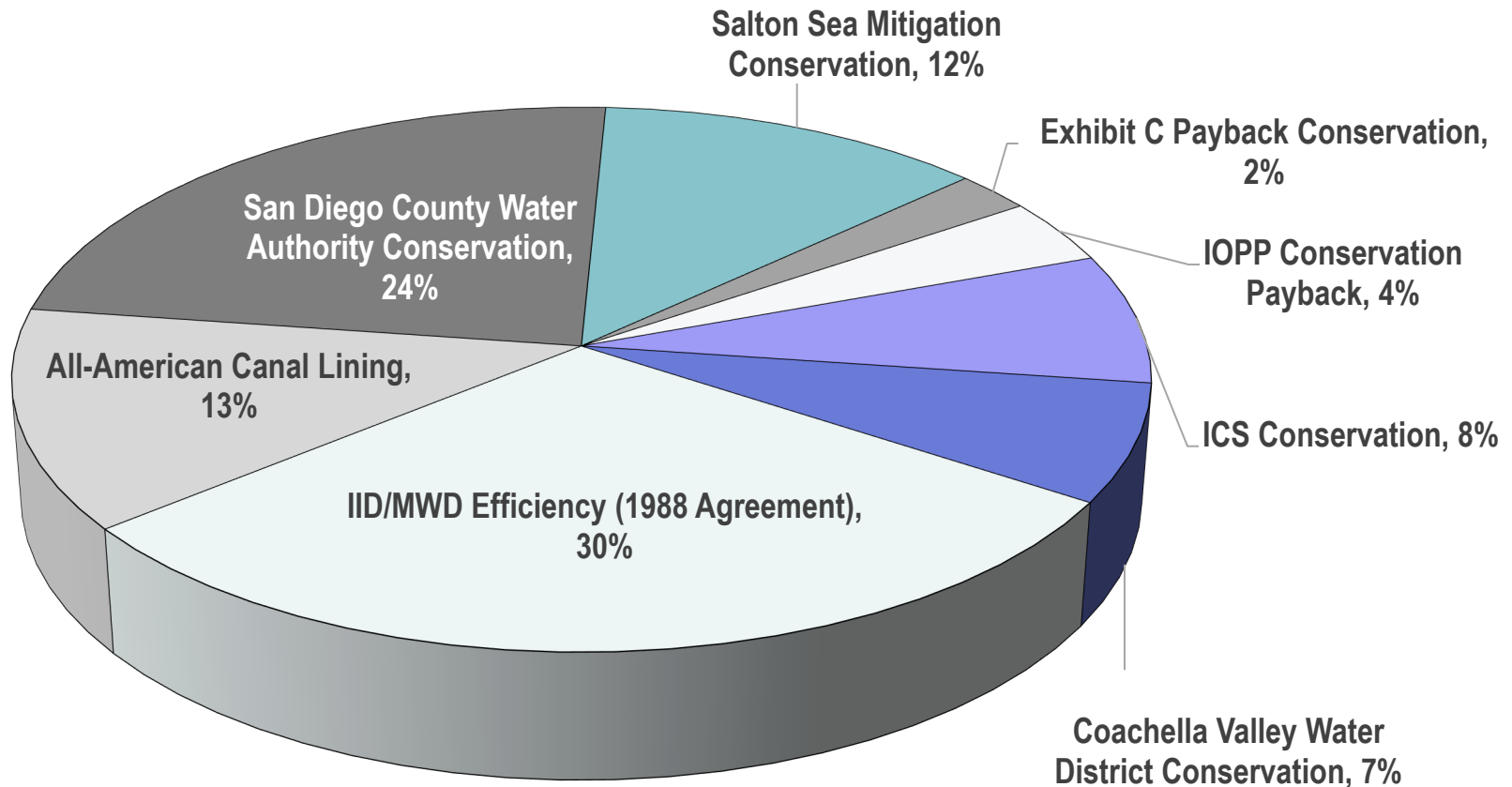
-  Federal
-  IID
-  Tribal



IID

A century of service.

IID's QSA Water Conservation & Transfer Summary (2003-2021* Total \approx 6.8 million acre-feet)



IID

A century of service.

* 2021 conservation yield estimated

www.iid.com