



AB 356- NONFUNCTIONAL TURF REMOVAL

ANDREW BELANGER, DIRECTOR OF PUBLIC SERVICES

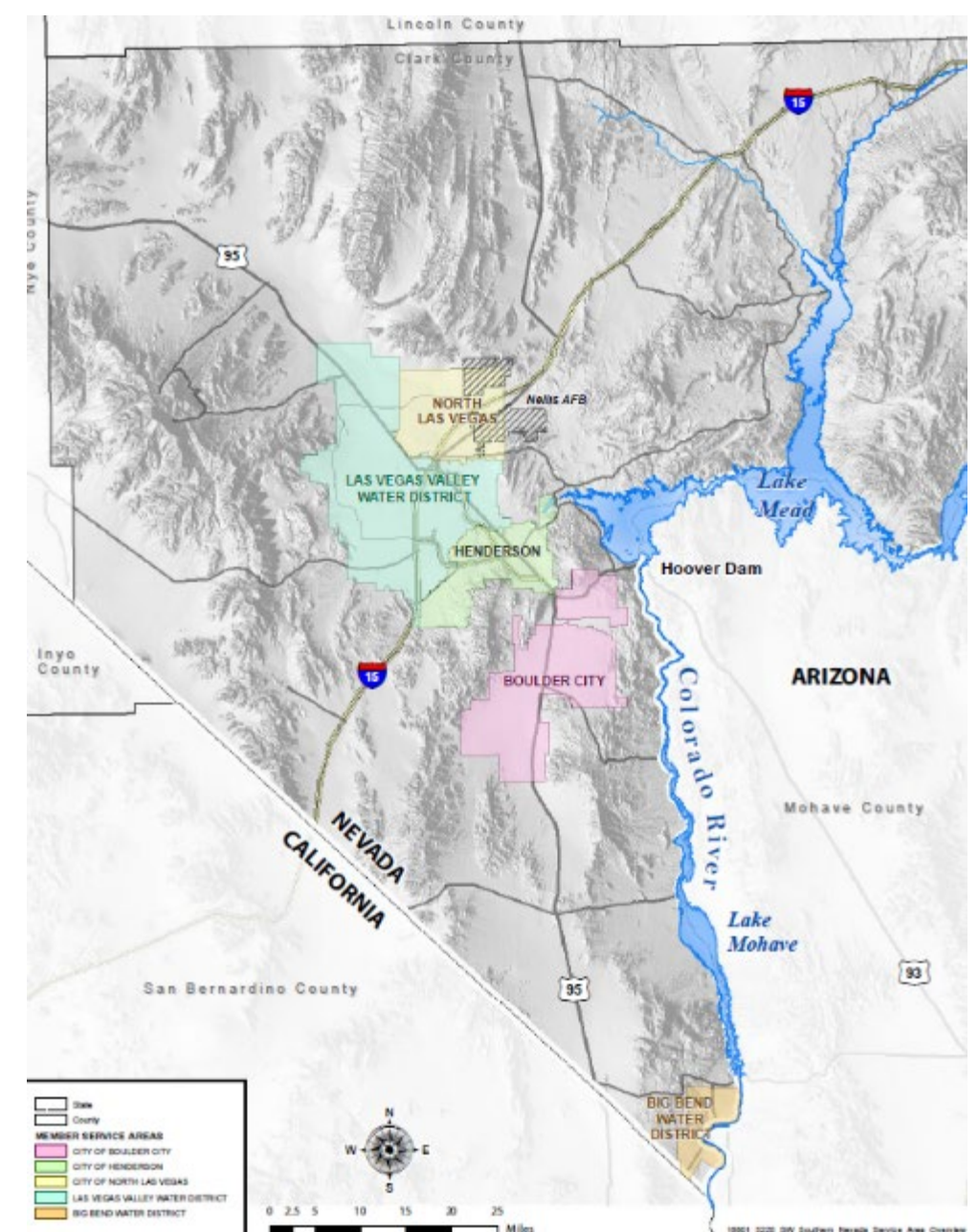


SOUTHERN NEVADA WATER AUTHORITY™

ABOUT SNWA

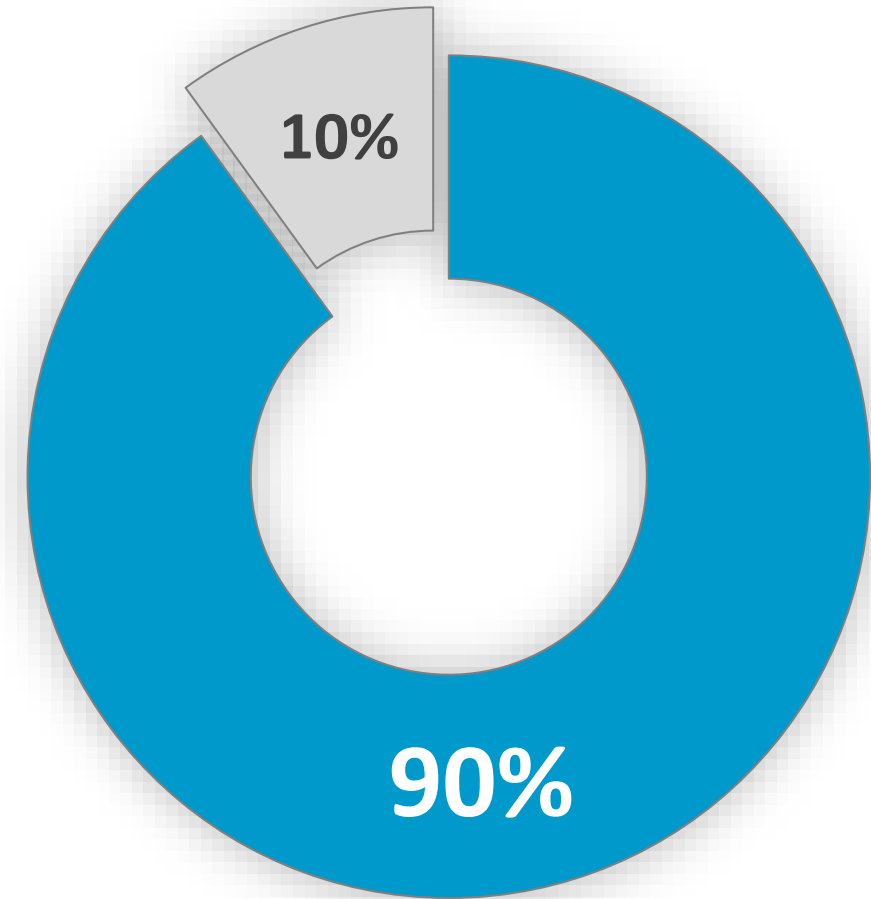
The Southern Nevada Water Authority is a regional entity whose members include Southern Nevada's water and wastewater agencies.

- Big Bend Water District (Laughlin, NV)
- City of Boulder City
- City of Henderson
- City of Las Vegas
- City of North Las Vegas
- Clark County Water Reclamation District
- Las Vegas Valley Water District



WATER RESOURCES

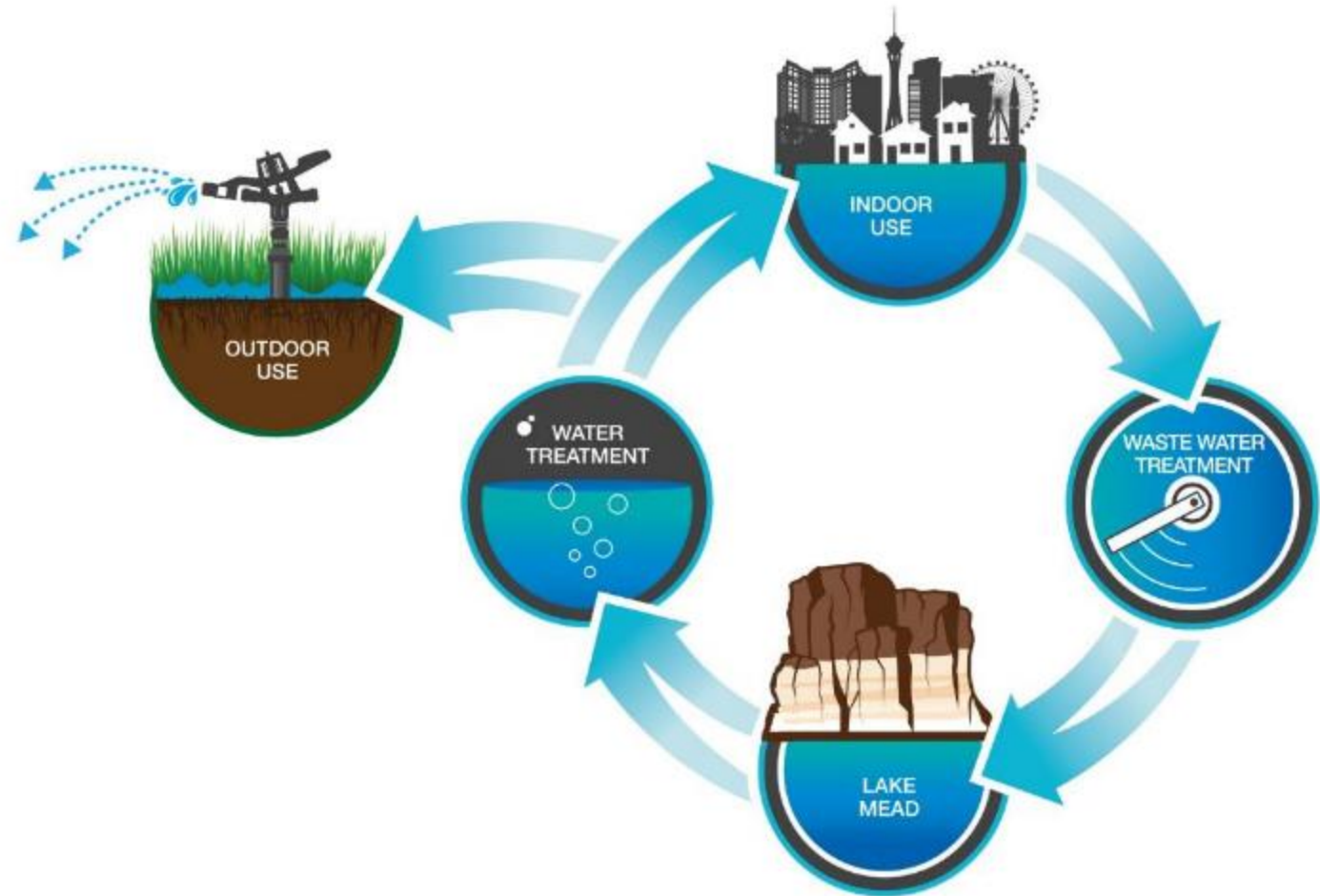
Southern Nevada is nearly fully reliant on the Colorado River to meet the community's water demands.



■ Colorado River ■ Other

RETURN FLOWS

Southern Nevada recycles 99% of water used indoors, thereby extending the availability of its resources.





Water conservation remains Southern Nevada's most effective means to maintain reliable water supplies.

CONSERVATION



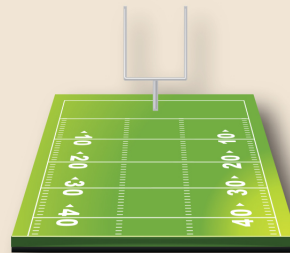
WATER SMART LANDSCAPES PROGRAM FACTS

200 MILLION

Square feet of grass has been replaced with
water-smart landscaping since 1999

THAT'S EQUIVALENT TO:

Enough grass to
cover more than



3,472

FOOTBALL FIELDS

Rolling an 18" wide
strip of sod



OR

101%

AROUND THE EARTH

152 BILLION

Gallons of water saved to date.

That's enough
water to fill the
Luxor Hotel
Pyramid

422
TIMES



Rev.8/21

**An average 15,000 square-foot conversion saves 825,000 gallons
each year (or \$300 a month)**

CONSERVATION

Southern Nevada has made considerable progress since 2002, but work remains.

Southern Nevada
POPULATION



Per Capita
WATER USE

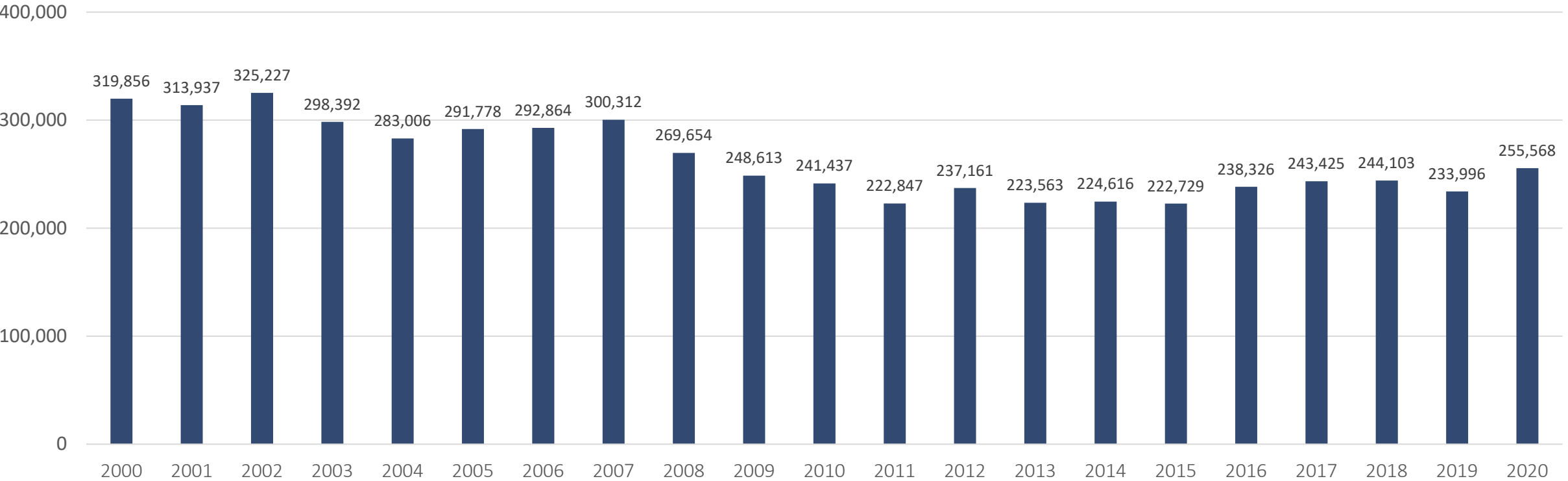


Colorado River Water
CONSUMPTION



PROGRESS HAS STALLED

Colorado River Consumptive Use (Acre-Feet Per Year)



Increased water consumption in 2020 demanded a greater conservation response



NONFUNCTIONAL TURF

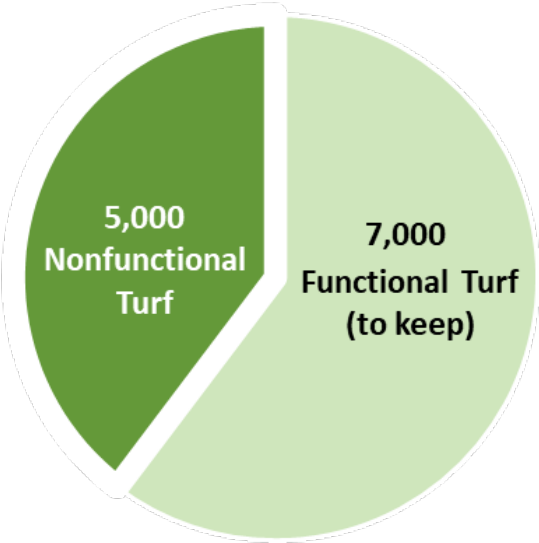
Unused turf is wasted water.

- Medians
- Roundabouts
- Neighborhood entries
- Streetscapes
- Front yards
- Unused back yards

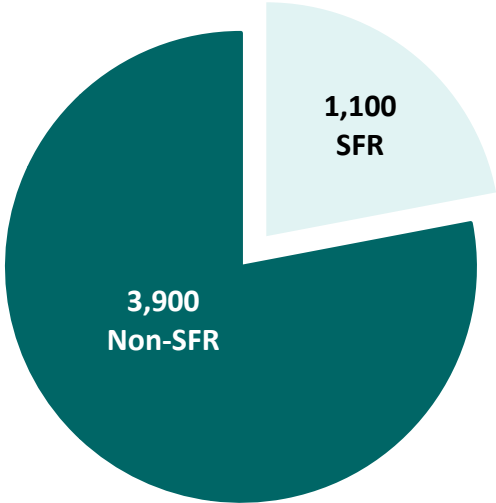
Nonfunctional turf is aesthetic only;
no recreational value.



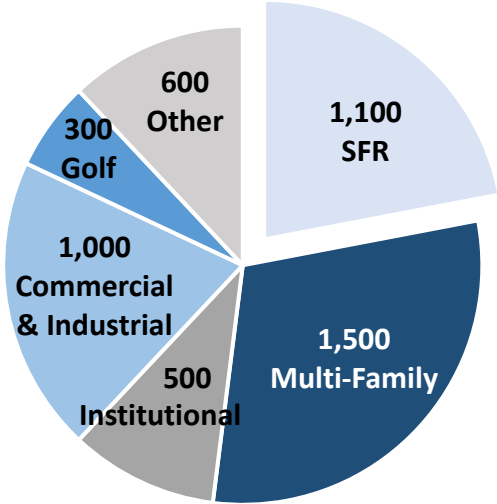
NONFUNCTIONAL TURF



Current Turf Totals



By Sector



By Customer Class

NONFUNCTIONAL TURF

Assembly Bill (AB) 356 passed during the 2021 Legislative Session and prohibits Southern Nevada's water supplies from watering existing unused grass by 2027.

Single family residential homes excluded.

REMAINING NONFUNCTIONAL TURF:
3,900 acres (170 million sq. ft)

POTENTIAL WATER SAVINGS:
9.5 billion gallons (29,150 acre-feet)



NONFUNCTIONAL TURF

Timeline of Events- AB 356

- April 5- Removal of nonfunctional turf mentioned during a bill hearing in committee
- April 9- Approved by the Assembly Natural Resources Committee
- April 29- Approved by the Assembly 30-12
- May 13- Approved by the Senate Natural Resources Committee
- May 21- Approved by the Senate 21-0
- June 4- Signed by the Governor

View committee hearings at: <https://www.leg.state.nv.us/>

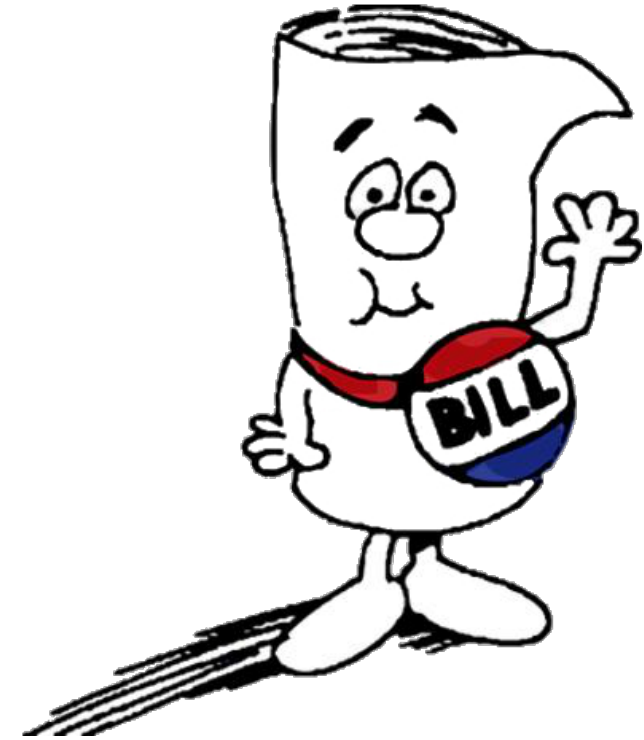
NONFUNCTIONAL TURF

AB 356 supported by a diverse group of stakeholders

- Vegas Chamber of Commerce
- Southern Nevada Home Builders Association
- The Nature Conservancy
- Nevada Conservation League
- Center for Biological Diversity
- Great Basin Water Network
- Clark County
- Cities of Las Vegas, North Las Vegas, and Henderson

No formal opposition to the bill

Community Associations Institute- trade association for common-interest communities testified as neutral



NONFUNCTIONAL TURF

AB 356 was approved in a bipartisan manner with support from legislators from both parties.

- Effort led by Assemblyman Howard Watts
- Supported by the Chair of the Natural Resources Committees in the Assembly and Senate- Assemblyman Watts and Senator Doñate
- Supported by both urban and rural legislators

ADVISORY COMMITTEE

AB 356 also required the creation of a Nonfunctional Turf Removal Advisory Committee (NTRAC) for the development of a plan for the removal of non-functional turf.

Mauricia Baca

Environmental Organization

Larry Fossan

Common-interest Community

Scott Black

Local Government

Dale Hahn

Golf Course

Stephanie Bressler

Multifamily Housing

David Strickland

Industrial/Commercial

Thomas Burns

Business

Brian Walsh

Common-interest Community

Tena Cameron

Office Park



ADVISORY COMMITTEE

MEETING SCHEDULE

- August 18: Overview of SNWA, Conservation Initiatives, and Committee Process
- September 7-14: Tours of areas with nonfunctional turf
- September 22- Overview of AB 356 and Functional/ Nonfunctional Turf
- October 20- Review of Definitions & Waivers
- November 17- Review & Approval of Recommendations Report
- *January: SNWA Board considers committee recommendation*

Hospitals & Medical Offices

Summerlin Hospital, Las Vegas:



All Turf as Shown:
79,711 sq. ft.

Non-Functional:
79,711 sq. ft.



DRAFT RECOMMENDATION #1

Define **non-functional** turf as:

“Non-functional Turf” means irrigated lawn grass area not meeting the below definition of Functional Turf, including without limitation, such areas in the following locations:

- Streetscape Turf: except as otherwise specified turf located along public or private streets, streetscape sidewalks, driveways and parking lots, including but not limited to turf within community, park and business streetscape frontage areas, medians and roundabouts
- Frontage, Courtyard, Interior and Building Adjacent Turf: turf in front of, between, behind or otherwise adjacent to a building or buildings located on a property not zoned exclusively as a single-family residence, including but not limited to maintenance areas and common areas.
- Certain HOA-Managed Landscape Areas: turf managed by a homeowner association that does not provide a recreational benefit to the community or that otherwise does not qualify as Functional Turf, regardless of the property zoning.

DRAFT RECOMMENDATION #2

Define **functional** turf as:

“Functional Turf” means an irrigated lawn grass area that provides a recreational benefit to the community and is:

- (a) located at least 10 feet from a street (except as otherwise specified), installed on slopes less than 25 percent, and not installed within street medians, along streetscapes or at the front of entryways to parks, commercial sites, neighborhoods or subdivisions; and
- (b) Active/Programmed Recreation Turf, Athletic Field Turf, Designated Use Area Turf, Golf Course Play Turf, Pet Relief Turf, Playground Turf or Resident Area Turf, as these terms are further defined and qualified.

DRAFT RECOMMENDATION #3

Establish a waiver process for non-single family residential properties for turf that is not permitted under the current definitions.

DRAFT RECOMMENDATION #3 (cont.)

ESTABLISHMENT TYPE	Resident Area Turf	Golf Course Play Turf	Pet Relief Area Turf	Active / Programmed Recreation Turf	Athletic Field & Playground Turf	Designated Use Area Turf
Schools & Daycares					Functional	
Youth Recreation & Senior Centers					Functional	
Homeowner Associations				Functional	Functional	
Government Facilities (excluding Parks)						
Commercial & Retail Services			Functional ¹			
Multi-Family Residential	Functional					
Commercial/Multi-Family Mixed Use	Functional					
Public Parks, Private Parks & Water Parks				Functional	Functional	
Golf Courses		Functional				
Cemeteries & Mortuaries						Functional
Religious Institutions					Functional	
Hospitals & Medical Offices						
Assisted Living & Rehabilitation Centers	Functional					
Commercial & Industrial Office Parks						
Hotels, Motels & Resorts						

1 Applies to businesses exclusively serving pets (veterinarians, pet boarding facilities, etc.)

DRAFT RECOMMENDATION #4

Reconvene the Nonfunctional Turf Removal Advisory Committee as needed to discuss other issues pertaining to the implementation of AB 356.

DRAFT RECOMMENDATION #5

Conduct outreach activities with non-single family residential property owners and managers to support implementation of AB 356.

NEXT STEPS:

- | | |
|-----------------------|--|
| Jan. 20, 2022: | SNWA Board meeting – consider recommendations report |
| 2022: | Public Outreach |
| TBD: | Reconvene NTRAC to discuss other issues pertaining to the implementation of AB 356 |

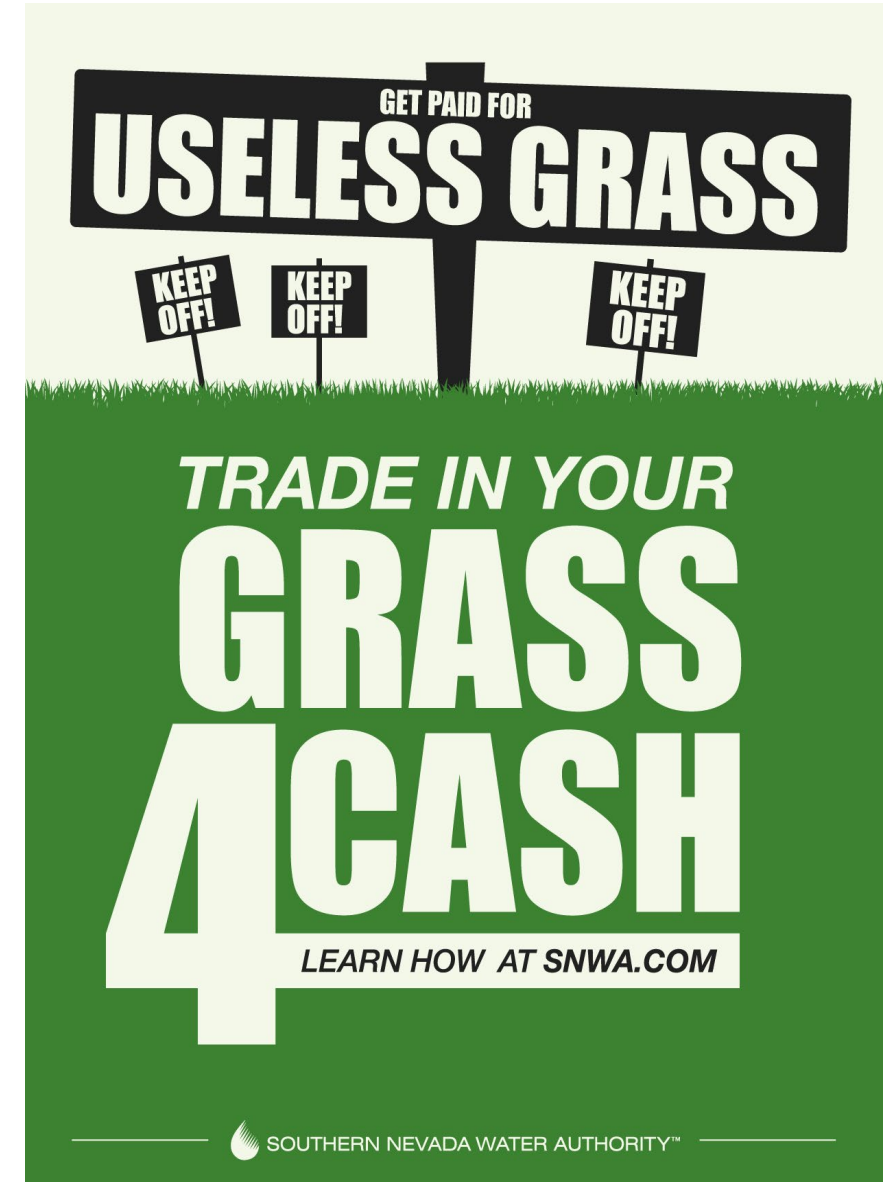


RESULTS

Since passage of AB 356:

- Single family residential turf conversion appointments have increased by more than 227%*.
- Multi-family turf conversion appointments have increased by 176%*.
- Commercial, Industrial, Institutional turf conversion appointments have increased by 53%*.
- Conservation field staff increasing from three to twenty-two to keep up with demand.

*As of November 30, 2021





**SOUTHERN NEVADA
WATER AUTHORITY®**