

INNOVATIONS FOR SUSTAINABLE WATER MANAGEMENT

A MUNICIPAL PERSPECTIVE

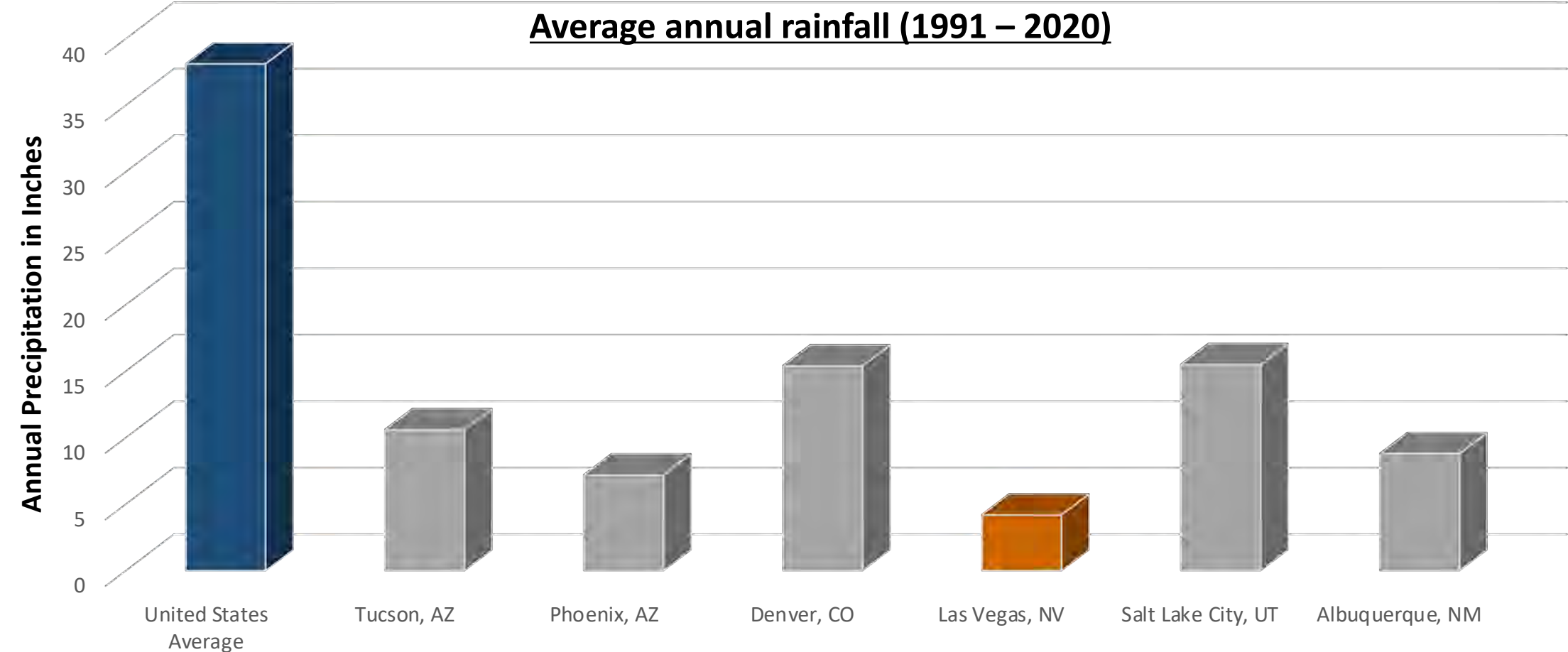
Colby Pellegrino

DEPUTY GENERAL MANAGER – RESOURCES



SOUTHERN NEVADA WATER AUTHORITY™

Las Vegas is the driest metropolitan area in the United States.



POLICY



NONFUNCTIONAL GRASS: State law prohibits nonfunctional grass by 2027



NEW GRASS: New grass installations are limited to parks, schools and cemeteries



SEPTIC: Municipal water supplies cannot be discharged in septic tanks



GOLF COURSES: Golf course water budgets were reduced by one-third. No new golf courses.



EVAPORATIVE COOLING: New buildings are prohibited from using evaporative cooling




FOUNTAINS: New ornamental water features are prohibited, including resorts



SWIMMING POOLS: New pools are limited to 600 sq. ft. surface area



WATER PRICING: Punitive water rates for top 10% of single-family residential users

A photograph of a modern backyard. In the background, a swimming pool is visible. The middle ground features a stone patio with two wooden chairs and a wooden bench. The foreground has a wooden bench and various plants, including a large potted rose bush with pink flowers. A house is visible in the background.

**Grass is prohibited,
except in new parks,
schools and
cemeteries.**


**New homes are prohibited
from installing grass.**

**New pools are
limited to 600
square feet at
homes.**



**New septic systems
are prohibited at
properties that
receive water from
the Colorado River**



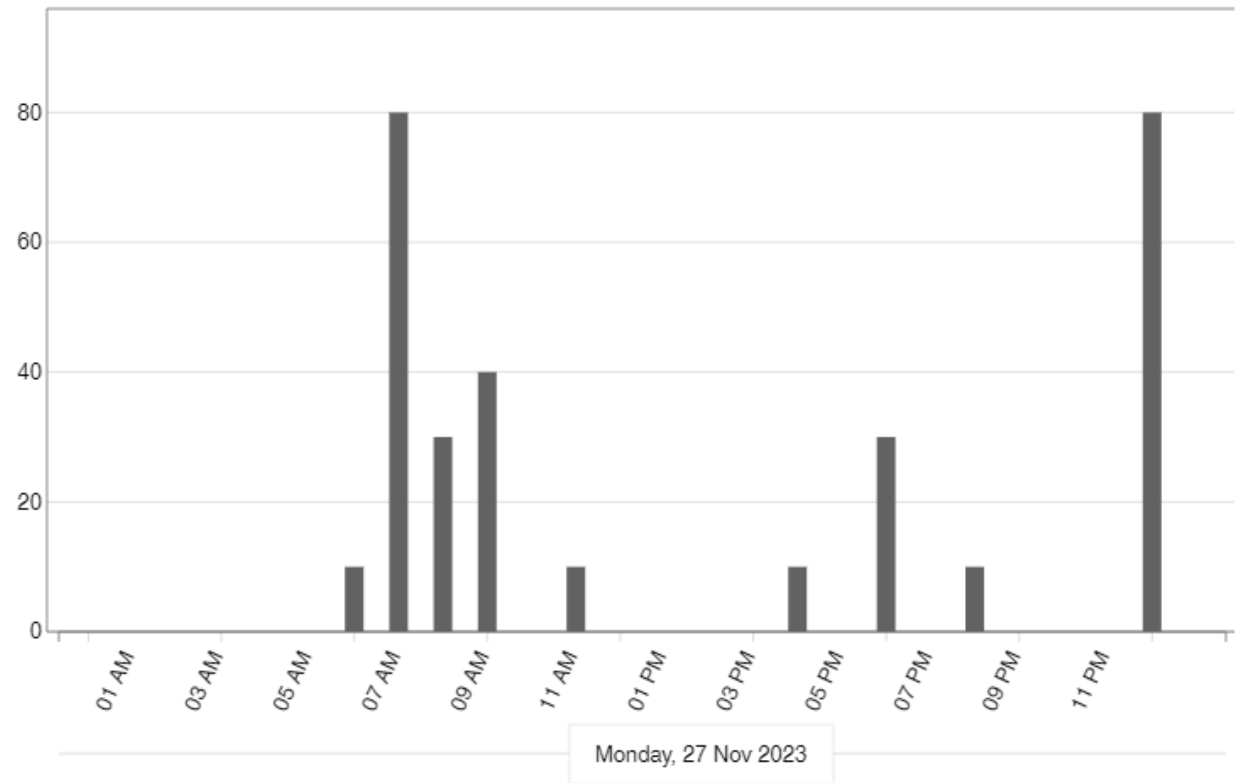
A photograph of an industrial facility, likely a power plant or refinery, featuring large cooling towers with corrugated metal siding and a complex network of white and blue pipes. A yellow pallet jack is visible on the ground in the foreground. The scene is brightly lit under a clear blue sky.

**Evaporative
cooling is
prohibited in new
development.**

TECHNOLOGY (AMI)

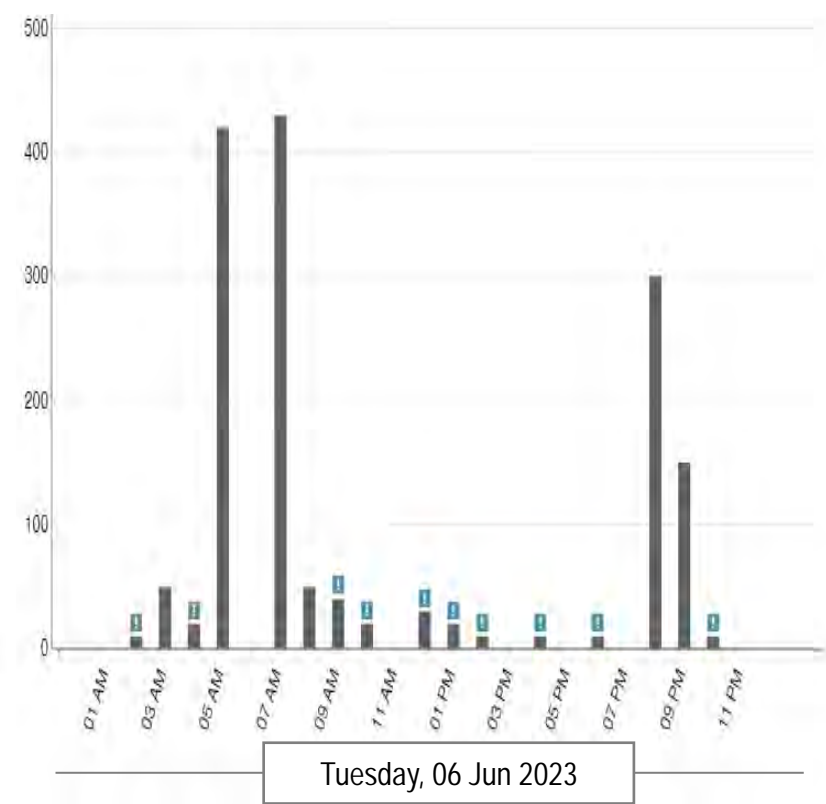
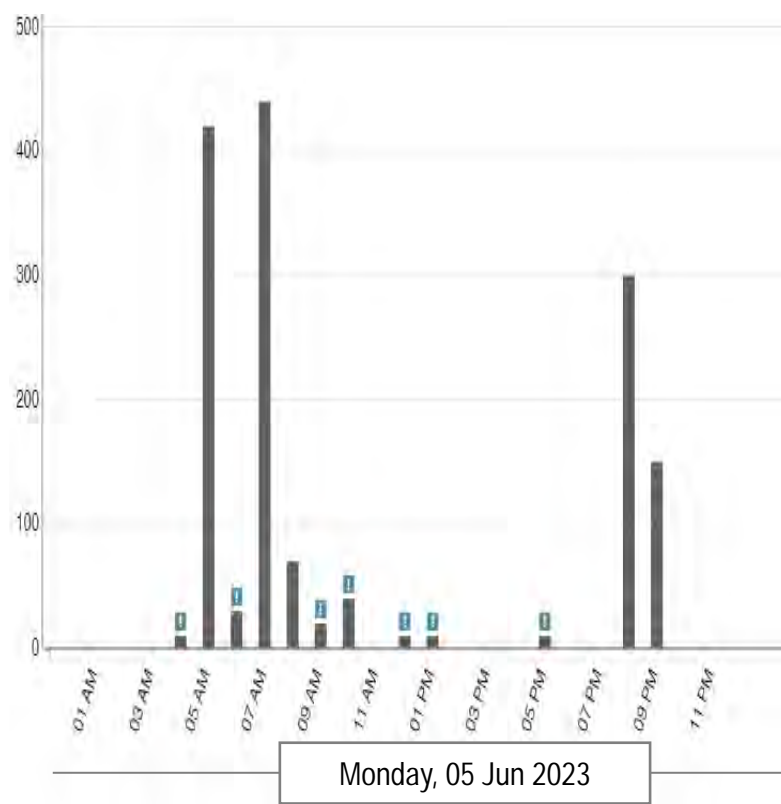
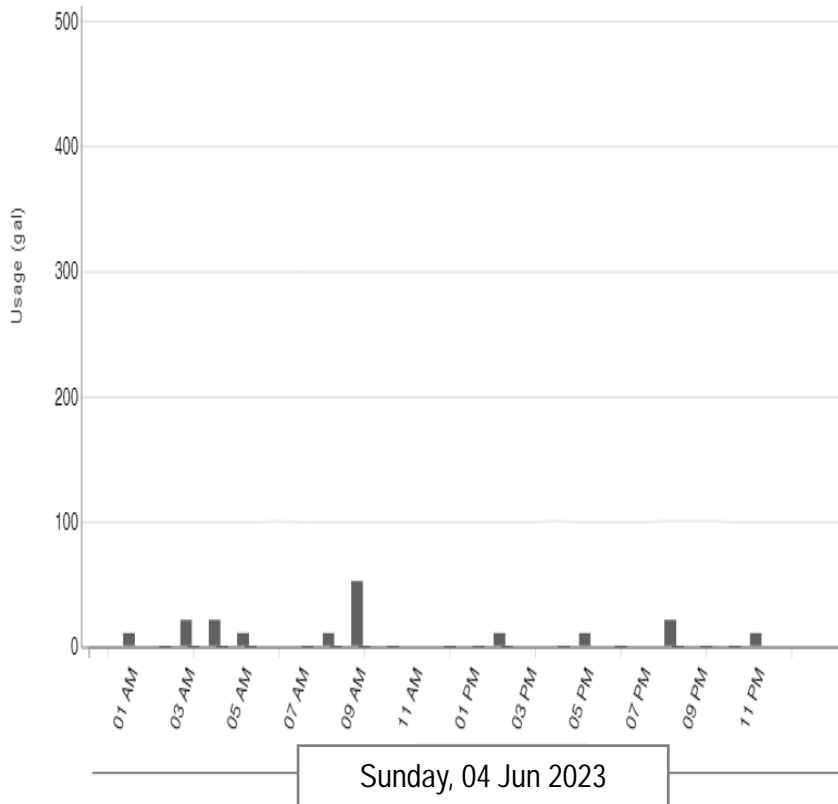
Automated Metering Infrastructure (AMI) offers granular, timely access to usage data.

- Control demand
- Identifies water theft
- Leak notifications
- Watering schedule compliance
- Hot zone maps for effective water waste enforcement
- More granular information for customers



AMI: HOURLY DATA

**AMI data can identify how customers are using water.
For example, irrigation events are apparent.**

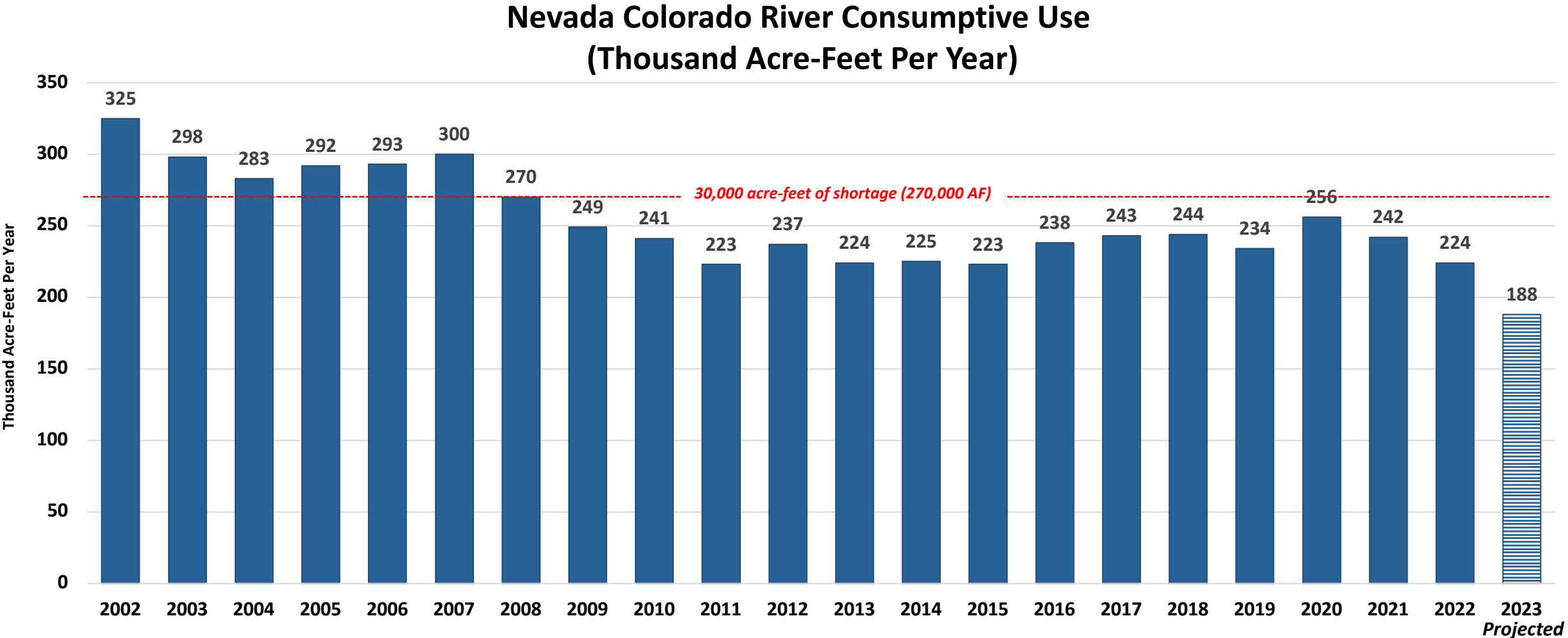


AMI: LEAKS

Leaks are typically very apparent on meter data.



RESULTS





SOUTHERN NEVADA WATER AUTHORITY™